



LEADER LINE



High strength joint bearing,super strength is safer.



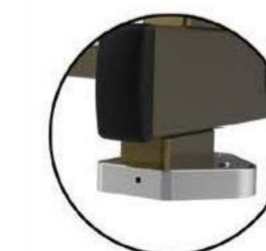
Install safety devices. Safer during use.



High strength joint bearing,super strength is safer.



Aluminum alloy foot,with non-slip rubber mat beautiful atmosphere, showing high-grade temperament.



The plastic foot board is connected with screws and installed with aluminum cover making it stable,beautiful and durable.



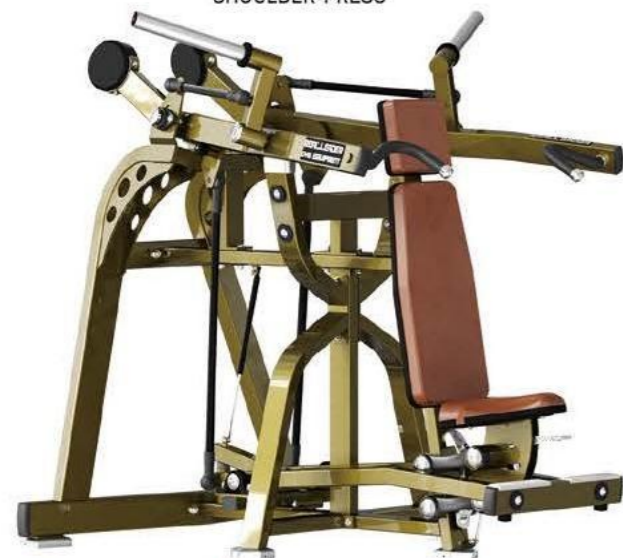
The gas spring design keeps the pedals in the starting position.

LD-1001
CHEST PRESS



- ▶ Dimension:1350x1550x1830mm
53.1x61x72in
- ▶ N.W/G.W.:340kg 750lbs/350kg 772lbs

LD-1003
SHOULDER PRESS



- ▶ Dimension:1650x1600x1435mm
65x63x56.5in
- ▶ N.W/G.W.:230kg 507lbs/240kg 529lbs

LD-1002
Horizontal Bench Press



- ▶ Dimension:1880x1950x850mm
74x76.8x33.5in
- N.W/G.W.:172kg 379lbs/182kg 401lbs

LD-1004
LATERAL RAISE/REAR DELTOID



- > Dimension:2100x810x1710mm
82.7x31.9x67.3in
- N.W/G.W.:160kg 353lbs/170kg 375lbs

LD-1005
SEATED BICEPS CURL



- ▶ Dimension:1100x1420x1060mm
43.3x55.9x41.7in
- > N.W/G.W.:96kg 212lbs/106kg 234lbs

LD-1007
DUAL BENCHSMITH MACHINE



- Dimension:2209x1867x1440mm
87x73.5x57in
- N.W/G.W.:255kg 562lbs/265kg 584lbs

LD-1006
HIGH ROW



- » Dimension:2000x900x2050mm
78.7x35.4x80.7in
- N.W/G.W.:210kg 463lbs/220kg 485lbs

LD-1008
DUAL TOWER SMITH MACHINE



- Dimension:2095x1939x2055mm
82.5x76.3x80.9in
- N.W/G.W.:295kg 650lbs/305kg 672lbs



LD-1009
ROWING



Dimension:1643x1571x1361mm
64.7x61.9x53.6in
N.W/G.W.:190kg 419lbs/200kg 441lbs

LD-1010
WIDE CHEST



Dimension:1620x1465x1738mm
63.8x57.8x68.4in
> N.W/G.W.:242kg 534lbs/252kg 556lbs

LD-1013
PECTORAL MACHINE



> Dimension:1475x1445x1045mm
58x56.9x41.1in
> N.W/G.W.:130kg 286lbs/138kg 304lbs

LD-1014
LOW ROW



> Dimension:1485x1850x1751mm
58.5x72.8x68.9in
> N.W/G.W.:140kg 308lbs/150kg 330lbs

LD-1011
LEVEL ROW



Dimension:1786x1435x1956mm
70.3x56.5x77in
> N.W/G.W.:235kg 518lbs/245kg 540lbs

LD-1012
FRONT LAT PULLDOWN



Dimension:1620x1775x2090mm
63.8x69.9x82.3in
> N.W/G.W.:196kg 485lbs/209kg 507lbs

LD-1015
INCLINE CHEST PRESS



> Dimension:1350x1550x1830mm
53.1x61x72in
> N.W/G.W.:245kg 540lbs/255kg 562lbs

LD-2001
SEATED LEG EXTENSION



Dimension:1550x1900x1200mm
61x74.8x47.2in
> N.W/G.W.:122kg 269lbs/132kg 291lbs

LD-2002
KNEELING LEG CURL



> Dimension:1200x1650x1350mm
47.2x65x53.1in
N.W/G.W:145kg 320lbs/155kg 342lbs

LD-2003
BOTHWAY SQUAT



> Dimonsion:1905x1520x1610mm
76.4x61x61.6in
> N.W/G.W:205kg 452lbs/215kg 474lbs

LD-2006
PENDULUM SQUAT



Dimension:2003x890x1835mm
78.9x35x72.2in
> N.W/G.W:223kg 492lbs/170kg 514lbs

LD-2007
GLUTE MACHINE



Dimension:2022x1543x1101mm
79.6x60.7x43.3in
> N.W/G.W:146kg 322lbs/146kg 344lbs

LD-2004
BELT SQUAT



> Dimension:1580x1650x1680mm
62.2x65x66.1in
> N.W.G.W:240kg 529lbs/250kg 551lbs

LD-2005
BUTTOCKS BRIDGE



Dimension:1635x1800x800mm
64.4x70.9x31.8in
> N.W/G.W:160kg 353lbs/170kg 375lbs

LD-2008
GLUTE MACHINE



> Dimension:1330x1120x1580mm
52.3x44.1x62.2in
> N.W/G.W:140kg 309lbs/150kg 330lbs

LD-2009
HIP ABDUCTOR



> Dimension:1865x1052x1589mm mm
73.4x41.4x62.6in
N.W/G.W:145kg 320lbs/170kg 342lbs

LD-2008
GLUTE MACHINE



> Dimension: 1330x1120x1580mm
52.3x44.1x62.2in
▶ N.W/G.W: 140kg 309lbs/150kg 330lbs

LD-2009
HIP ABDUCTOR



> Dimension: 1865x1052x1589mm mm
73.4x41.4x62.6in
N.W/G.W: 145kg 320lbs/170kg 342lbs

LD-2011
LEG PRESS



> Dimension: 2653x1600x1560mm mm
1044x630x614in
N.W/G.W: 500kg 1102lbs/540kg 1190lbs

